



IT@GSG

JOSH OLSON – CHIEF TECHNOLOGY OFFICER

JARROD KARAU – DEPUTY CHIEF TECHNOLOGY OFFICER

NEW IT LEADERSHIP



it-help-mgmt@mtu.edu
www.it.mtu.edu



Michigan Tech
Create the Future

WE WANT YOUR FEEDBACK

- 2014 Survey Results
 - <http://www.it.mtu.edu/OIT/projects-reports.php>

Michigan Tech
Create the Future

MEET BRIAN.

BRIAN IS MICHIGAN TECH I.T.'S OUTREACH COORDINATOR. HE'S ON CAMPUS EVERY WEEK TO CHAT WITH YOU ABOUT I.T. AT MICHIGAN TECH. SOMETIMES HE GIVES AWAY COOL STUFF, TOO. THIS WEEK LOOK FOR BRIAN AT:

FISHER HALL
FRI, SEPT 12
10AM-1PM



Michigan Tech
Michigan Technological University
Information Technology

Michigan Tech
Create the Future

OPEN STUDENT I.T. FORUM

Sponsored by Michigan Tech Information Technology

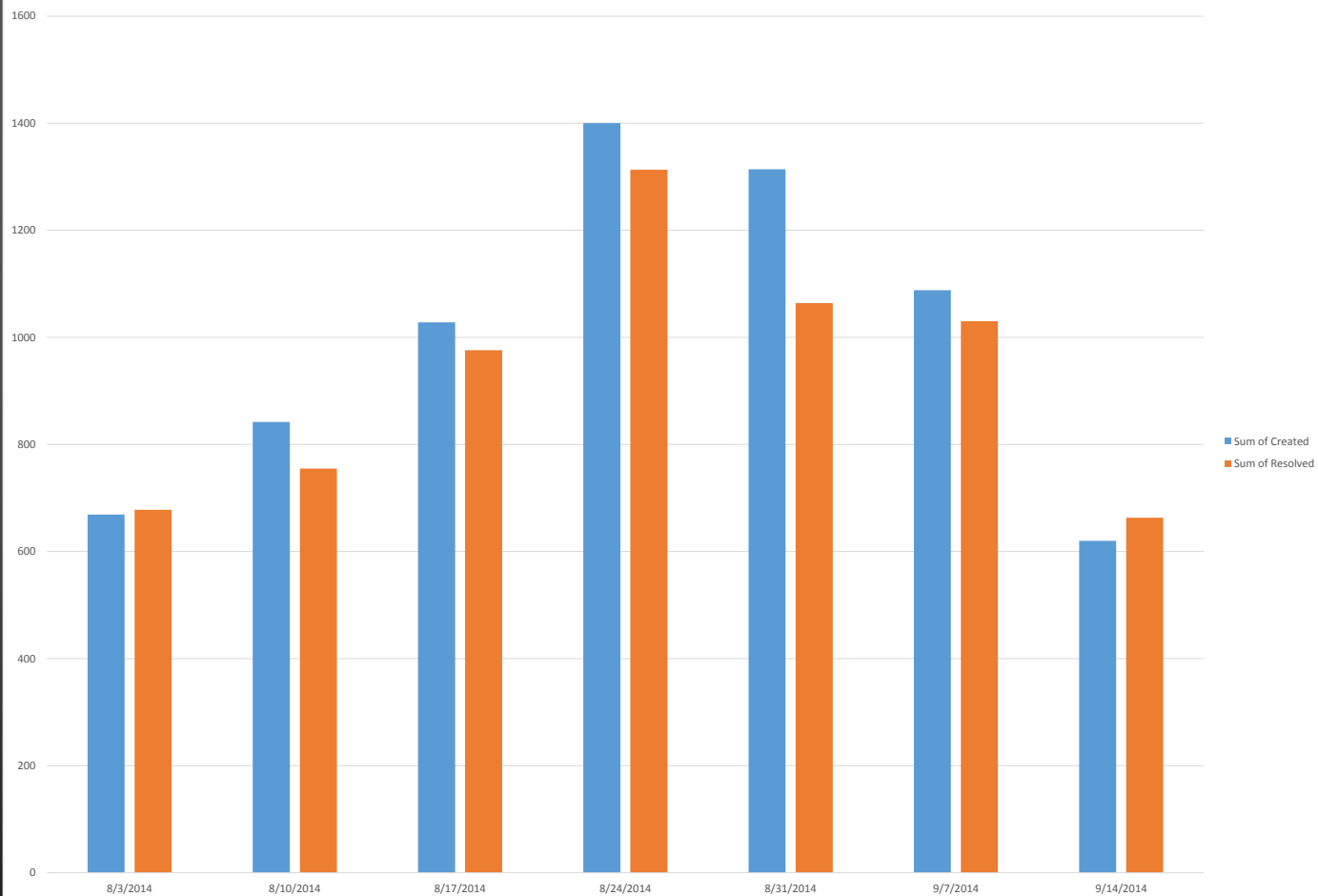
September 24, 2014, 6:00pm - 8:00pm
Memorial Union Building, Alumni Lounge



RSVP on Facebook

Michigan Tech
Create the Future

Created and Resolved Tickets by Week: 3 August, 2014 - Present
Delta:481, Current Operating Load: 1,071



Michigan Tech
Create the Future

COMPUTER LABS

- 16 Reserve- able labs (reserved for teaching classes, open to students when no class is scheduled)
- Library – Computers on each floor (250+ seats)
- www.it.mtu.edu > Hardware & Software > Campus computer lab listing – shows seat availability
- Michigan Tech Mobile App – shows seat availability



Michigan Tech
Create the Future

LIBRARY MAC AND PC MIGRATION

- In support of collaboration in the Library
 - Moved 10 distributed Macs to one location
 - Replaced with PCs to create 10 contiguous environments
- In response to quiet space
 - Collaborating with the Library to move 30 third-floor PCs to the first-floor 24-hour space

THE “LAPTOP INITIATIVE”

- On-hold for now
- Significant research and student feedback needed

WIRELESS LOUNGES



Repurposed Library furniture

- AOB G04
- Chemsci 717, B10
- Dillman 209
- EERC 318
- Fisher 232
- M&M U203
- MEEM 125
- Rekhi 113
- SDC 236

Full list at www.it.mtu.edu/computer-labs

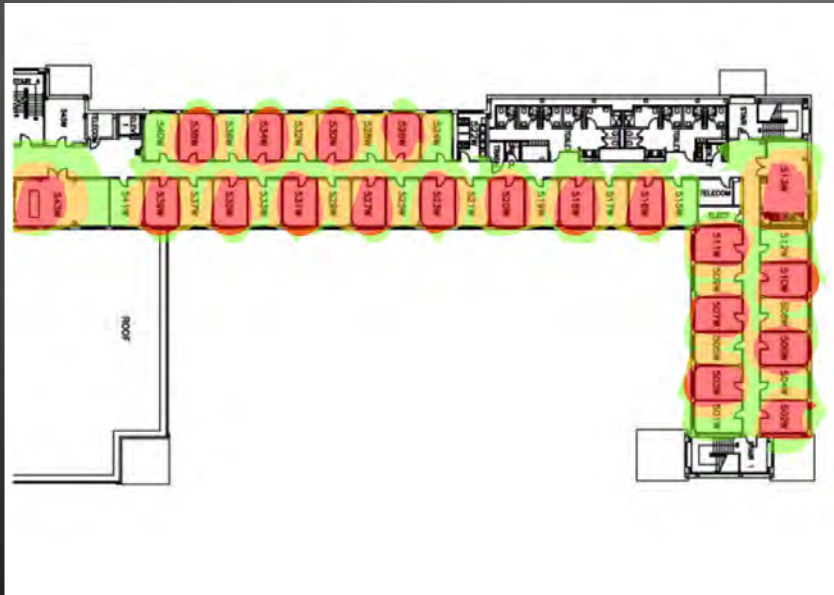
Michigan Tech
Create the Future

PRINTING

- Black & White – free / Color – for charge
- www.it.mtu.edu/printing - includes BYOD instructions
- 30 printers across campus
- Print from your device with Paper Cut software
- Tap your card at print stations to release your job
- Some locations only have a color printer but allow you to release a B&W job to the printer at no cost

RESIDENCE HALL WIRELESS

- Installed nearly 700 access points

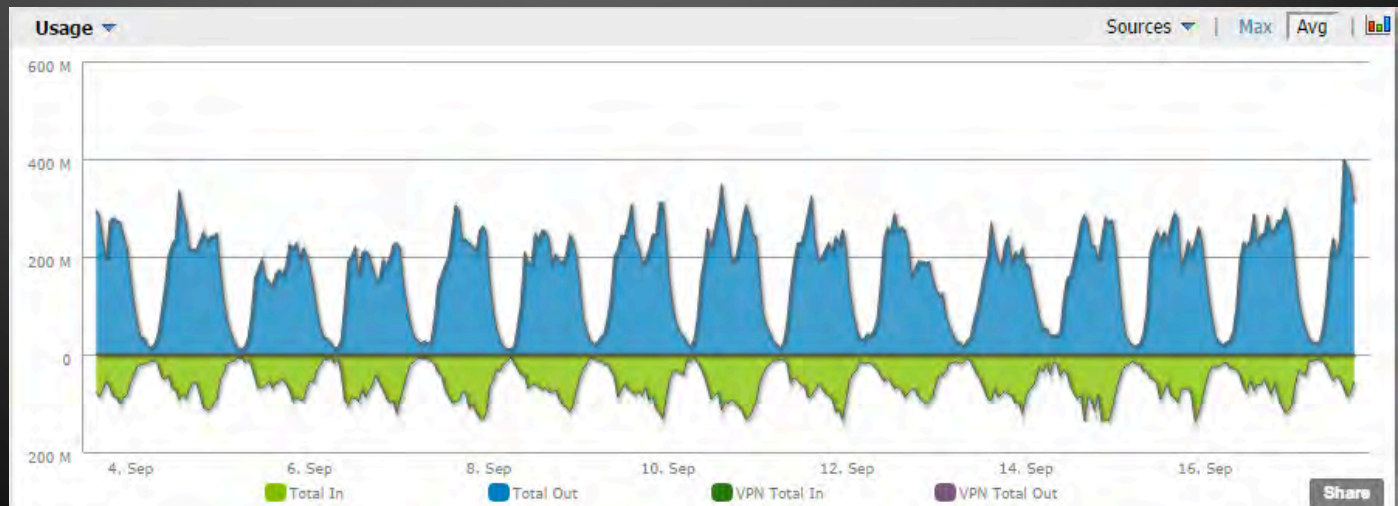


Plan to reutilize equipment (200 access points) in Academic areas

Michigan Tech
Create the Future

WIRELESS

- Removed bandwidth cap
- Removed Bradford Persistent Agent
- 6,000 clients today



FREE SOFTWARE

- downloads.it.mtu.edu
- Microsoft Security Essentials (Anti-Virus)
- AutoCAD, EndNote, Matlab, Mathematica, Microsoft Office 365 ProPlus, Microsoft DreamSpark, and more

GRADUATE STUDENT RESOURCES

IT Resources for Graduate Students

Requesting IT Help

- Email: it-help@mtu.edu
- Phone: (906) 487-1111
- Visit the IT and Library Service Center on the first floor in the Van Pelt and Opie Library
- We're on Facebook! Visit us at: <http://facebook.com/MichiganTechIT>

Michigan Tech IT Information

Michigan Tech IT Web site:	www.it.mtu.edu
Software Download Center:	downloads.it.mtu.edu
Michigan Tech IT Facebook Page:	facebook.com/MichiganTechIT
Michigan Tech IT Twitter Feed:	twitter.com/MichiganTechIT
IT Status Page	status.it.mtu.edu
IT Blog	blogs.mtu.edu/it
Text Updates	Text itinfo to 555-888 (standard rates apply)

Lab Seats on Campus

Michigan Tech IT provides computers available for student use on campus in a variety of locations, from open labs to graduate labs.

The labs restricted for graduate student use are:

AOB G05	College of Business Grad Students
Dow 211	GMES Grad Students
Dow 853	Civil and Environmental Grad Students
M&M 631A	MSE Grad Students
MEEM 707	Grad Students
Noblet G036	SFRES Grad Students

H: and M: Drive - What is it and how do I use it?

Your home directory (H: Drive) is a place to store files that you can access anywhere on or off campus. The M: Drive is a department- and program-specific share. More information is at it.mtu.edu/m-drive.

Remote Access

Need to connect to an MTU server from off-campus? Remote Desktop Protocol (RDP) instructions are at it.mtu.edu/remote.php.

Printing on Campus

There are 23 printers across campus - 13 have color printing capabilities - and all have free scan-to-email capability available to all students, faculty and staff.

Black and white printing is free, with a nominal charge for color printing. More information on printing and necessary software downloads is at it.mtu.edu/printing.

Research Computing and Visualization

Michigan Technological University has several computing and visualization clusters and one-off work-stations, for research and teaching. For more information, please contact Gowtham, Director of Research Computing (g@mtu.edu/906-487-3593) or visit <http://hpc.mtu.edu/>.

Anti-virus Software - Microsoft Security Essentials

Available to students, faculty, or staff through an agreement between Michigan Tech and Microsoft, Microsoft Security Essentials is free and readily available for download on Windows computers. If you currently have an alternative anti-virus solution installed such as McAfee, you will need to uninstall it prior to installing Security Essentials.

Download Microsoft Security Essentials for home users at: <http://windows.microsoft.com/en-us/windows/security-essentials-download>.

Software Download Center

Michigan Tech faculty, staff, and students can download software that is licensed for use on their personally-owned computers, including Matlab, Microsoft Office, and more. Check it out at: <http://it.mtu.edu/downloads>.

Michigan Tech
Create the Future

CONNECT WITH US

- Facebook: /MichiganTechIT
- Twitter: @MichiganTechIT
- Text itinfo to 555-888 to subscribe to updates (standard text rates apply)
- www.it.mtu.edu
- status.it.mtu.edu

Michigan Tech
Create the Future

GETTING HELP

- Call 906-487-1111
- Email it-help@mtu.edu
- Not getting help? Email it-help-mgmt@mtu.edu