

# United States Army Corps of Engineers, Detroit District

## Recent Graduate Program

The 2-year Entry Level Program consists of training via **developmental** and **rotational** assignments as appropriate to your career field.



### Our Benefits Include:

- ◆ Competitive salary
- ◆ Flexible schedule
- ◆ Leadership development programs
- ◆ Retirement programs
- ◆ Active employee assistance program available
- ◆ Mass transit subsidy program
- ◆ Credit for previous military & civilian service
- ◆ Paid time off
- ◆ Health, vision, and dental plans with substantial employer contribution

## Interested? Contact us at:

E-mail: [lre-ec@usace.army.mil](mailto:lre-ec@usace.army.mil)

USACE, Detroit District outreach e-mail

### Detroit District Offices



### To learn more visit:

[www.lre.usace.army.mil](http://www.lre.usace.army.mil)

U.S. Army Corps of Engineers, Detroit District website

[www.usace.army.mil](http://www.usace.army.mil)

U.S. Army Corps of Engineers, HQ - Links to all Divisions, District Offices, and Laboratories



US Army Corps  
of Engineers®  
Detroit District



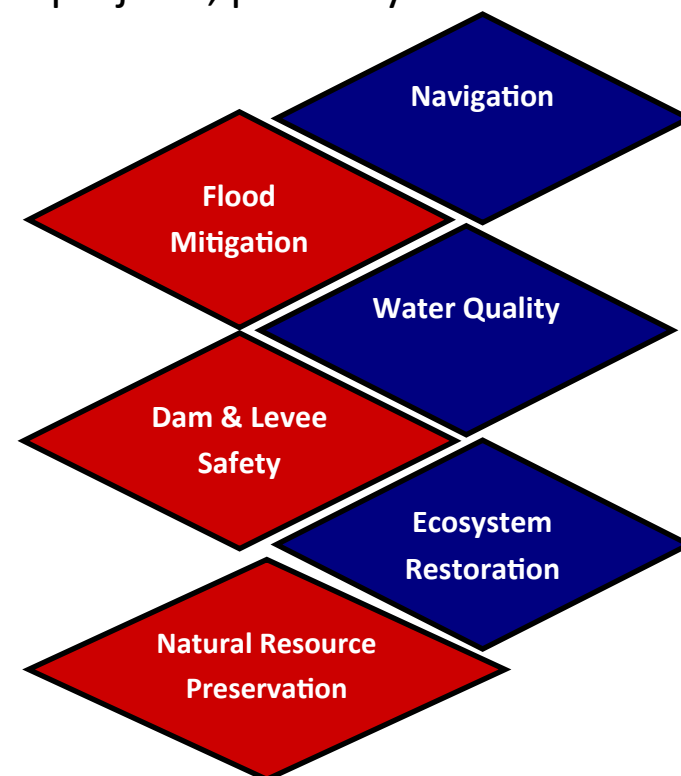
US Army Corps  
of Engineers  
Detroit District



## Engineer

### Recent Graduate Program

The Detroit District's Mission is to **investigate, plan, design, construct, operate** and **maintain** congressionally authorized water resource projects, primarily focused on:

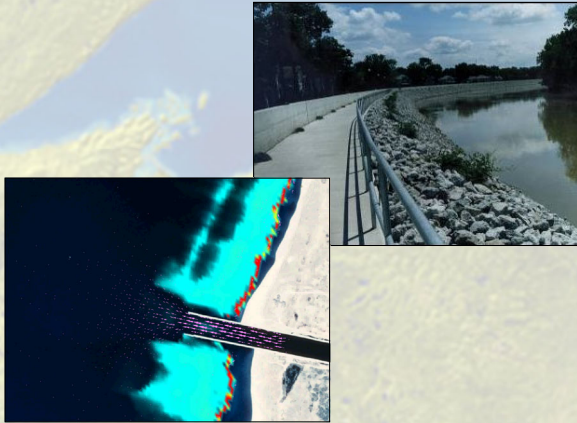




# You will rotate through the technical elements of our organization which include...

## Hydraulics & Hydrology

- ◆ Hydraulic and coastal engineering modeling and studies
- ◆ Great lakes water level forecasting
- ◆ River Restoration & Design; Floodplain mapping



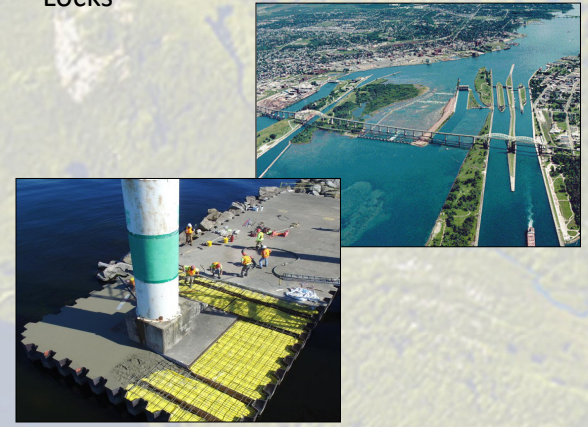
## Field Office

- ◆ Construction experience in one of our field offices
- ◆ Construction management; Quality Assurance
- ◆ Surveying methods



## Operations

- ◆ Operations and maintenance of 94 harbors and the connecting channels
- ◆ Navigational project management
- ◆ Operations and maintenance of the Soo Locks



## Regulatory

- ◆ Permit evaluation of shoreline and waterway projects
- ◆ Wetland identification
- ◆ Assess aquatic systems



## Engineering & Construction

- ◆ Structural, geotechnical, and civil design projects
- ◆ Development of plans, specifications, cost estimates, and design calculations
- ◆ Field experience through structure inspections and project site visits



## Planning, Programs, and Project Management

- ◆ Project development and management
- ◆ Environmental studies and impact statements

