

Semester 1

UN1015
Composition
(3)

Semester 2

UN1025
Global Issues
(3) *

Semester 3

HU/FA CORE
OR
CRITICAL & CREATIVE
THINKING (GOAL 4) LIST
(3) *

Semester 4

SBS CORE
OR
SOCIAL RESPONSIBILITY &
ETHICAL REASONING
(GOAL 8) LIST
(3) *

Semester 5

UN 1015
UN 1025
EC3400
Economic Decision
Analysis
(3) *

Semester 6

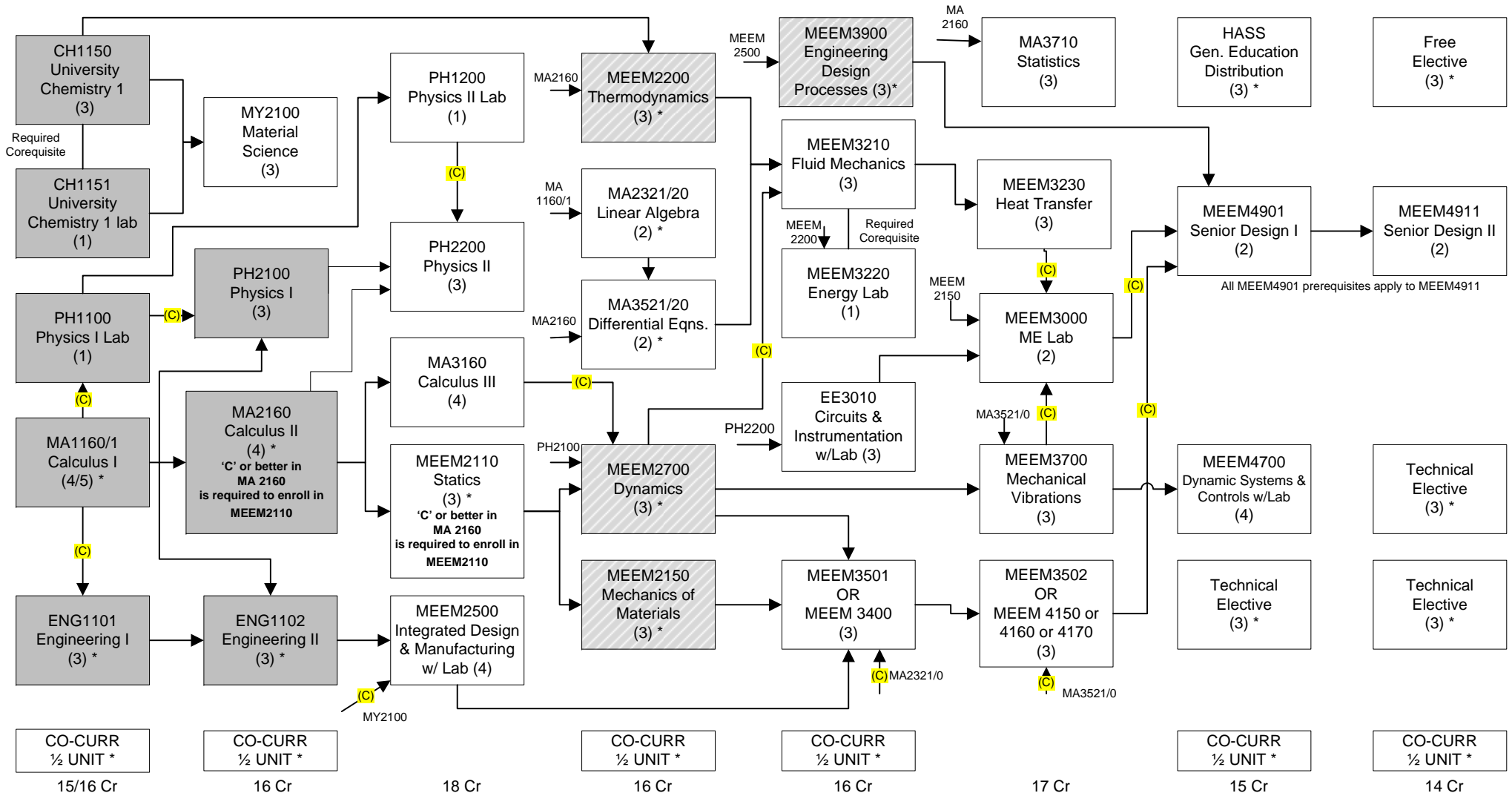
HASS
Gen. Education
Distribution
(3) *

Semester 7

UN 1015
UN 1025
HASS
Gen. Ed. Dist.
(3) *
3000 level or higher

Semester 8

UN 1015
UN 1025
HASS
Gen. Ed. Dist.
(3) *
3000 level or higher



CO-CURR
½ UNIT *
15/16 Cr

CO-CURR
½ UNIT *
16 Cr

CO-CURR
½ UNIT *
18 Cr

CO-CURR
½ UNIT *
16 Cr

CO-CURR
½ UNIT *
16 Cr

CO-CURR
½ UNIT *
17 Cr

CO-CURR
½ UNIT *
15 Cr

CO-CURR
½ UNIT *
14 Cr

Foundation Course *
 Restricted Course *
 → Prerequisite (Course must be completed prior to enrollment)
 → (C) → Concurrent Prerequisite (A prerequisite course that may be taken concurrently)
 → Required Corequisite (Courses must be taken together)
 () Course Credits

*** See notes on back**

127 Total Credits August 2015

1. **General Education Requirements:** 12 total credits of required courses plus 12 credits of HASS distribution electives (see below). Required courses are UN 1015-Composition (3 credits), UN1025-Global Issues (3 credits), a Humanities/Fine Arts course (HUFA, 3 credits), and a Social/Behavioral Science course (SBS, 3 credits). Approved lists of HUFA and SBS courses are available in the ME Advising Center and are linked on the ME Advising web page.
2. **UN 1025 Global Issues Language Option:** 3 credits of 3000-level or higher modern language may be substituted directly for UN 1025. **Any students with previous language experience in Spanish, French, German, or Mandarin must take the Modern Language Online Placement Test.** Instructions are linked on the ME Advising web page.
3. **HASS General Education Distribution:** 12 total credits, **6 credits must be 3000 level or higher (does not include EC 3400). EC 3400 is no longer a HASS course for ME students, but is still required for the BSME.** The approved list of HASS courses and requirements is available in the ME Advising Center and are linked on the ME Advising web page.
4. **Technical electives:** Approved list is available in the ME Advising Center and is linked on the ME Advising web page.
5. **Engineering Fundamentals:** ENG1001 (2 credits) plus ENG1100 (2 credits) is equivalent to ENG1101 (3 credits). ENG1002 or passing spatial visualization test is required for ENG1001 and ENG1101 as a concurrent pre-requisite. ENG1002 or passing the spatial visualization test is also a pre-requisite for ENG1102. MA1160/1161 is a concurrent pre-requisite for ENG1101, and MA1031 or MA1032 are concurrent pre-requisites for ENG1001. MA1160/1161 is a non-concurrent pre-requisite for ENG1102. ENG 1102 project content varies by section number.
6. **Math:** Students are placed into an initial math course based on ACT math or math placement exam score (AP, IB, CLEP). MA1160 (4 credits) or MA1161 (5 credits) satisfy the Calculus I requirement. The Math department teaches MA2321 accelerated in the first half of a given semester and MA3521 accelerated in the second half of the semester (i.e., register for the same section number of both MA2321 and MA3521 in the same semester). For the accelerated sequence, both MA 2321 and 3521 must be registered for together. MA2320 and MA3520 are offered as full semester courses for those students choosing to take only one of these courses in a given semester. MA2320, MA2321, or MA 2330 are approved pre-requisites for MA3520 or MA3521. MA 2330 and MA 3530 or 3560 are approved substitutes for MA 2320 and MA 3520, respectively.
7. **A grade of 'C' or better in MA 2160 is required as a pre-requisite for MEEM 2110. This grade requirement is new for Fall 2013.**
8. **Free electives:** Any Michigan Tech course/s or approved transfer course/s that are 1000-level or above, and are not duplicated or equivalent courses.
9. **Cooperative Education:** UN3002 (Cooperative Education) is used as free electives in the BSME curriculum.
10. **Co-curricular Activities:** Mainly physical education courses with some additions. Three units (or six half units) are required for graduation. These units will be included as earned hours and may be used to determine full-time enrollment status. These are in addition to the 127 total credits required for the BSME. Co-curricular list is available in the ME Advising Center and is linked on the ME Advising web page. These units are graded pass/fail and are not included in credit hours used for calculation of any grade point averages (cumulative, engineering, or departmental).
11. **Pre-requisite** courses are noted by an arrow. The pre-requisite course must be successfully completed **prior** to taking the subsequent course. **Concurrent pre-requisites** are noted by a 'C' within the arrow and can be taken at the same time.
12. **Co-requisite** courses are courses that must be taken together.
13. **Transfer or study abroad courses** are not included in credit hours used for GPA calculations. Transfer credit is awarded for Michigan Tech equivalent course work only if a grade of 'C' or better (2.00/4.00) or equivalent is earned at a transfer institution. Study abroad credit will be awarded by International Programs and Services based on passing a course according to equivalent international standards.
14. **EnGPA - Engineering Grade Point Average** is comprised of the following Foundations Concentration (ECO) courses (shown shaded on flow chart). An EnGPA ≥ 2.75 will automatically allow progression into MEEM2200, MEEM2700, MEEM2150, MEEM3900 and subsequent MEEM courses. These courses are restricted until the required EnGPA is met or academic advisor approval for enrollment is granted.

CH1150 + CH1151	4 credits
ENG1101 (or ENG1001 + ENG1100)	3/4 credits
ENG1102	3 credits
MA1160/61	4/5 credits
MA2160	4 credits
PH1100	1 credit
PH2100	3 credits
UN1015	3 credits

March 2013

This flow chart is not an official list of degree requirements. Adjustments may be required due to curriculum changes.
ME Advising web page: <http://www.mtu.edu/mechanical/undergraduate/advising/>